



NORTH CITY
ONE

CBRE



The gateway to North City, NC1 is located on the high-profile, highly-visible corner of North City Drive at Twin Oaks Valley Road - the main entrance to North City. Turning into the project, you immediately see this dynamic building with retail space on the first floor and office space above with impressive outdoor patios.

SPECS & FLOOR PLANS

±134,572
Total SF

±37,000
Avg. Floor Plate SF

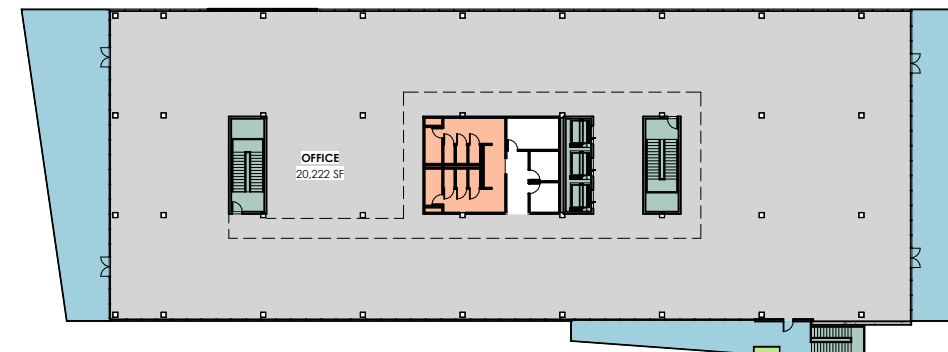
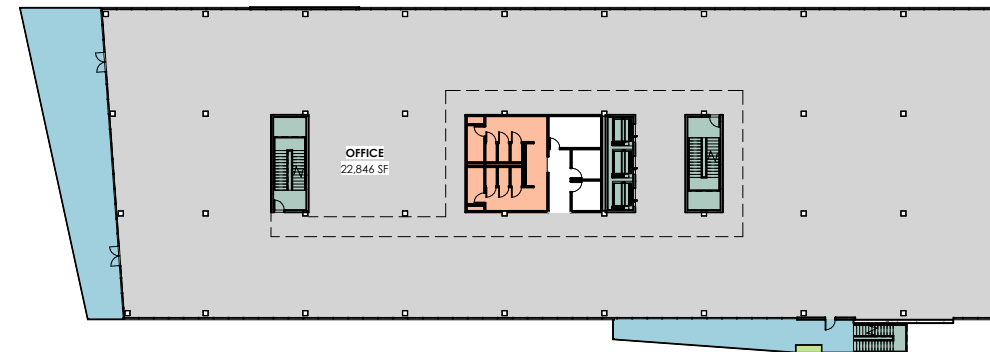
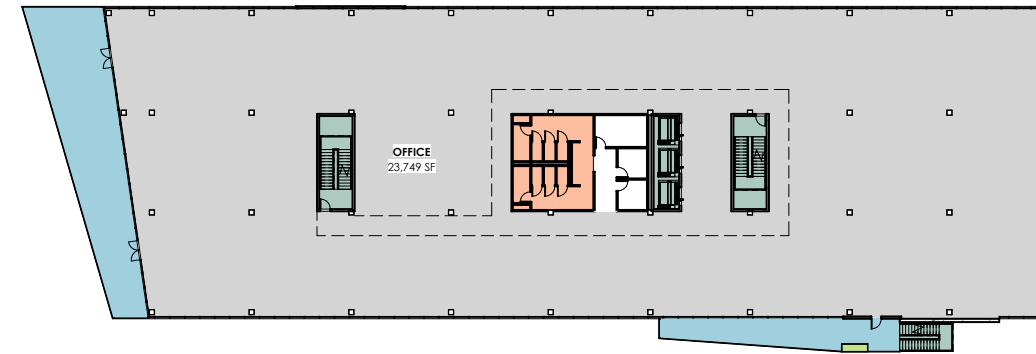
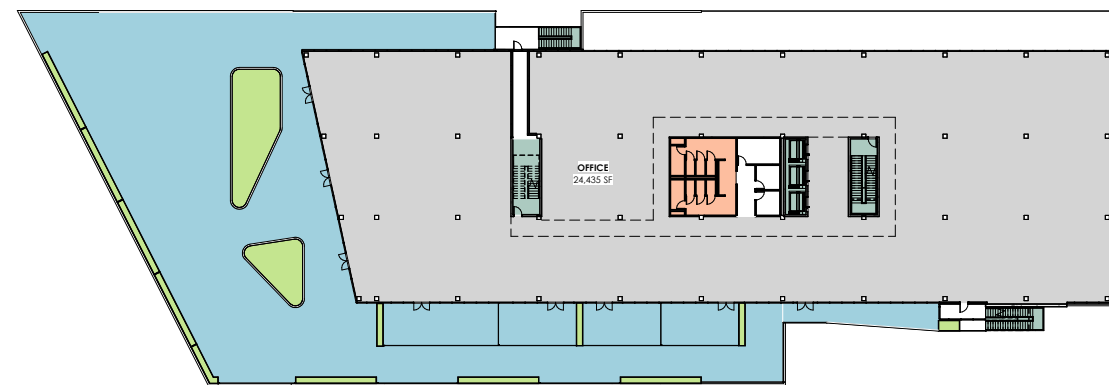
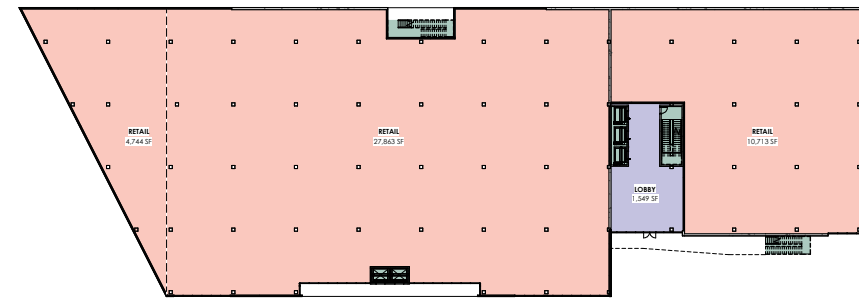
4
Floors

14.0'
Floor to
Floor Height

4/1,000
Parking Ratio in
covered garage

3
Elevators

- OFFICE SPACE
- CIRCULATION
- RESTROOMS
- LOBBY
- BALCONY
- RETAIL
- AMENITY



LEVEL THREE
23,749 RSF

LEVEL FOUR
22,846 RSF

LEVEL FIVE
20,222 RSF

LEVEL ONE
43,320 RSF Retail

LEVEL TWO
24,435 RSF



NORTH CITY OFFICE

CHRIS PASCALE

Lic. 00890849
858.546.4601
chris.pascale@cbre.com

MIKE HOECK

Lic. 01386247
858.646.4700
mike.hoeck@cbre.com

CHRIS WILLIAMS

Lic. 01791013
858.646.4743
chris.williams1@cbre.com

northcity.com/leasing

CBRE

4301 La Jolla Village Drive, Suite 3000 | San Diego, CA 92122 | © 2021 CBRE, Inc.

This information has been obtained from sources believed reliable. We have not verified it and make no guarantee, warranty or representation about it. Any projections, opinions, assumptions or estimates used are for example only and do not represent the current or future performance of the property. You and your advisors should conduct a careful, independent investigation of the property to determine to your satisfaction the suitability of the property for your needs.