



NORTH CITY

78

CBRE



78

NC78 is a statement building with extreme visibility along Highway 78 and includes stunning views of North County San Diego. The identity and branding opportunities at NC78 are simply unparalleled.

SPECS & FLOOR PLANS

- OFFICE SPACE
- CIRCULATION
- RESTROOMS
- LOBBY
- BALCONY
- RETAIL
- AMENITY

LEVEL ONE
14,603 RSF

±90,478
Total SF

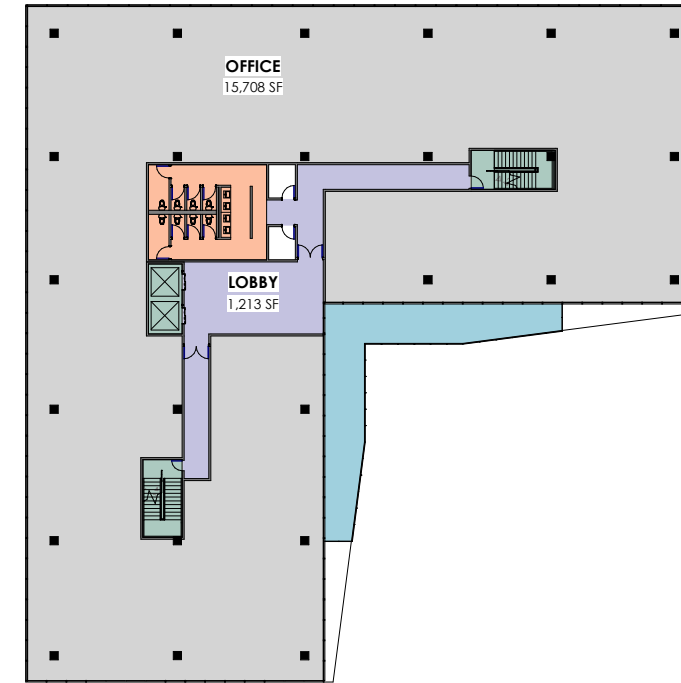
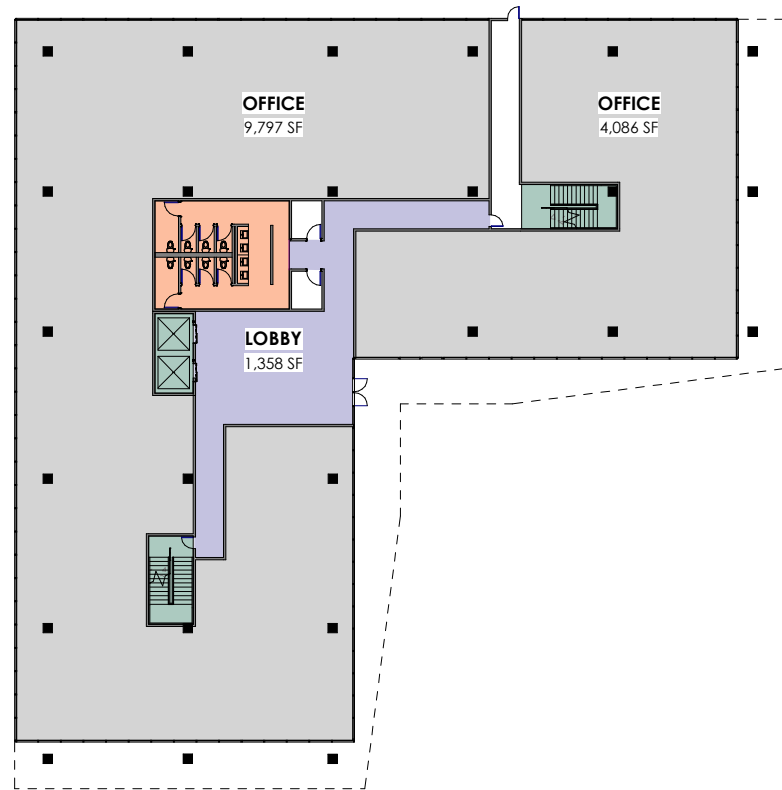
±15,000
Avg. Floor Plate SF

6
Floors

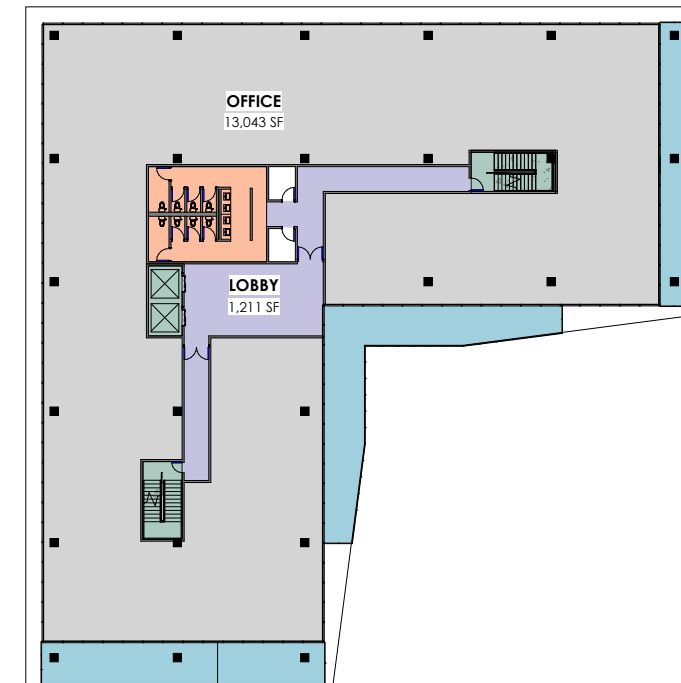
14.0'
Floor to Floor Height

4/1,000
Parking Ratio in covered garage

2
Elevators



LEVELS TWO-FIVE
15,708 RSF



LEVEL SIX
13,043 RSF



NORTH CITY OFFICE

CHRIS PASCALE

Lic. 00890849
858.546.4601
chris.pascale@cbre.com

MIKE HOECK

Lic. 01386247
858.646.4700
mike.hoeck@cbre.com

CHRIS WILLIAMS

Lic. 01791013
858.646.4743
chris.williams1@cbre.com

northcity.com/leasing

CBRE

4301 La Jolla Village Drive, Suite 3000 | San Diego, CA 92122 | © 2021 CBRE, Inc.

This information has been obtained from sources believed reliable. We have not verified it and make no guarantee, warranty or representation about it. Any projections, opinions, assumptions or estimates used are for example only and do not represent the current or future performance of the property. You and your advisors should conduct a careful, independent investigation of the property to determine to your satisfaction the suitability of the property for your needs.